

Progress Corticon BRMS

Understanding Business Rules and How to Use Them

Dr. Mark Allen

Chief Technology Officer, Decision Management
Founder and Former CEO, Corticon Technologies

PROGRESS
EXCHANGE 2013

DISCOVER. DEVELOP. DELIVER.

Agenda

- Introduction to Business Rules Management
 - What Is Business Rules Management?
 - The Business Rules Management Problem
 - The Corticon Solution
- Corticon Customer Success
- Corticon Differentiation
- Corticon Demo
- Corticon and OpenEdge
- Summary & Q&A

What Is Corticon Business Rules Management?

**Software to help make
the **Right Decision** at the **Right Time**
with **Business Agility****

- **Should we pay this claim?**
- **What offer should we make, now?**
- **What resource should we allocate?**

What Is Business Rules Management?

Decisions are governed by business rules



DECISION

Should we pay
this claim?



RULE

Reject claims with
invalid billing codes

BRMS – Business Rules Management Systems

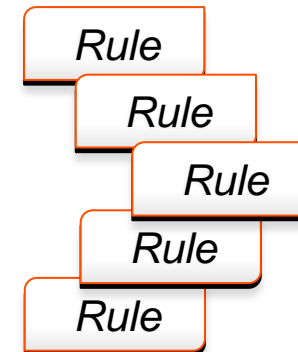
(a.k.a. rule engines) externalize decision logic from applications and represent as business rules



**Claims Management
System**



BRMS



The Problem: Automating Business Rules

Traditional approach is programming-based

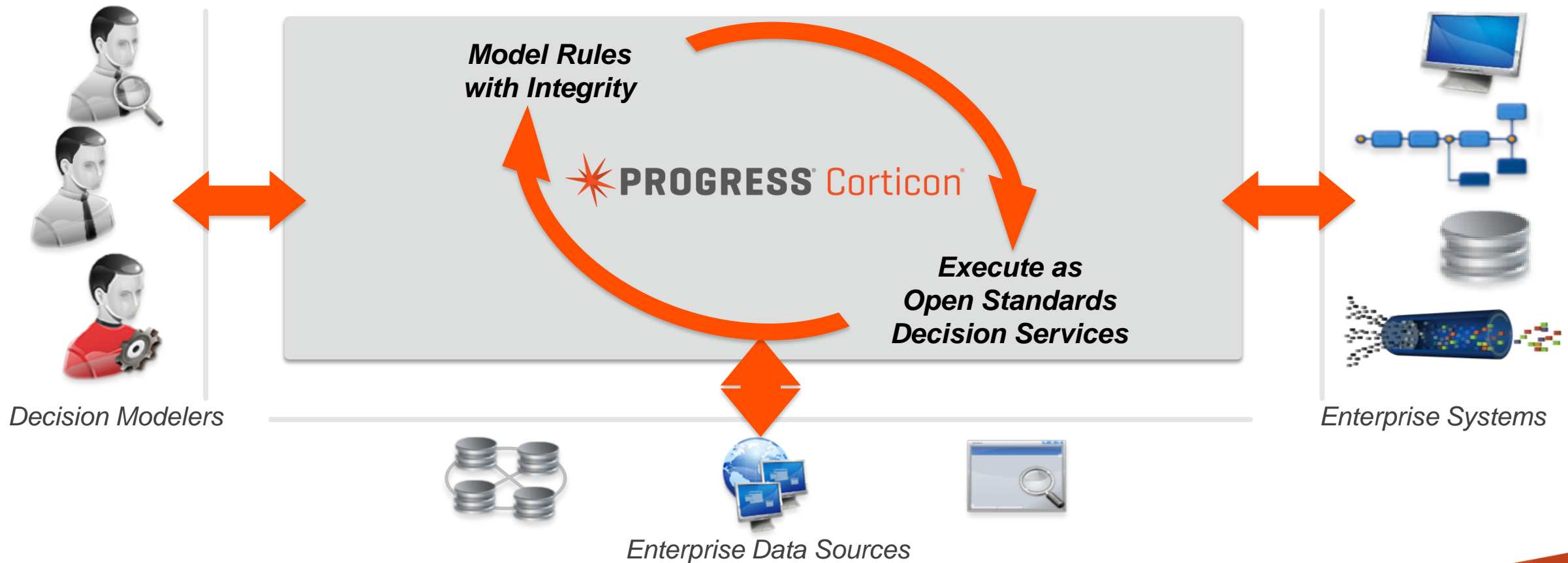
- Simple rules difficult to automate, sophisticated ones impossible
- Single change can impact hundreds of rules/processes



There Is a Better Way...

The Solution: Progress Corticon Business Rules Management System

- Separate decision logic from code
- Empower business users
- Ensure performance & scalability
- Enable fast, safe changes



Agenda

- Introduction to Business Rules Management
 - What Is Business Rules Management?
 - The Business Rules Management Problem
 - The Corticon Solution
- Corticon Customer Success
- Corticon Differentiation
- Corticon Demo
- Corticon and OpenEdge
- Summary & Q&A

Progress Corticon: 500+ Customers

INSURANCE	FINANCIAL SERVICES	GOVERNMENT	HEALTH & HUMAN SERVICES	eCOMMERCE
-----------	--------------------	------------	-------------------------	-----------



FBI



OPM



TOKIO MARINE



DIA



State Department



Progress Corticon: Key Use Cases

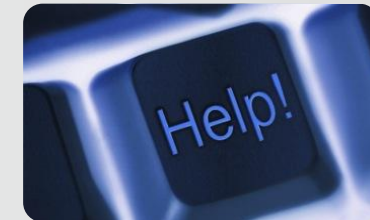


Commerce (Sales & Marketing)

Apply – Price/Quote – Recommend – Police

Customer Servicing

Intake – Validate – Adjudicate – Recover – Fraud



Manufacturing & Supply Chain

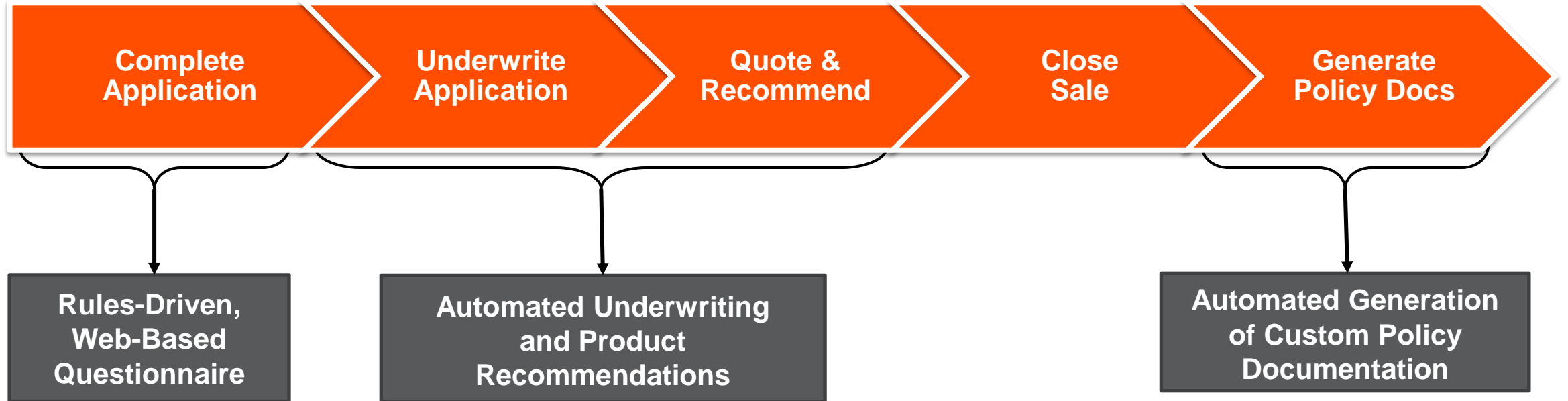
Production Planning – Resource Allocation – Logistics

Enterprise Rules Management

Decision Analytics as a Business & IT Discipline



Corticon Case Study: Online Insurance Sales



*Powered By Corticon
Business Rules Management System (BRMS)*





Tools
[Simulator](#)
[Your Odds](#)

Choose A Plan

.....

We are pleased to offer you these plans. The prices quoted will be locked in for 30 days from the date of the quote. If you have a promotion code, enter it now to get your discount.

If you have any questions or need any further assistance, please call 1-8-PRECEDENT (1-877-323-3368).

 Click "Calculate" for your discount.

Calculate

Tempo

Deductible:
none

Medical Costs:
We Pay 60%

Prescription Costs:
We Pay 60%

Activate Additional Coverage:
After We Pay \$ 1,000
In Network Benefits

Monthly Premium \$101.72	Amendments*	play read
Benefits At A Glance View	Plan Details View	Save Save and Come Back

[choose this plan] 

Rhythm

Deductible:
\$250

Medical Costs:
We Pay 70%

Prescription Costs:

Monthly Premium \$102.30	Amendments*	
Benefits At A Glance	Plan Details	

Did You Know?

.....

Good news! A couple teaspoons of dark chocolate each day could be just as good as aspirin for maintaining cardiovascular

Instant Underwriting

This page presents the full offer

- Final rates
- Customized plan selection
- Plan amendments based on health conditions
- All quote data on this page was stored by the Rules engine

- Grow revenues thru new sales channel
- Streamline process from days to minutes
- Rapidly respond to changes in market direction

precedent |



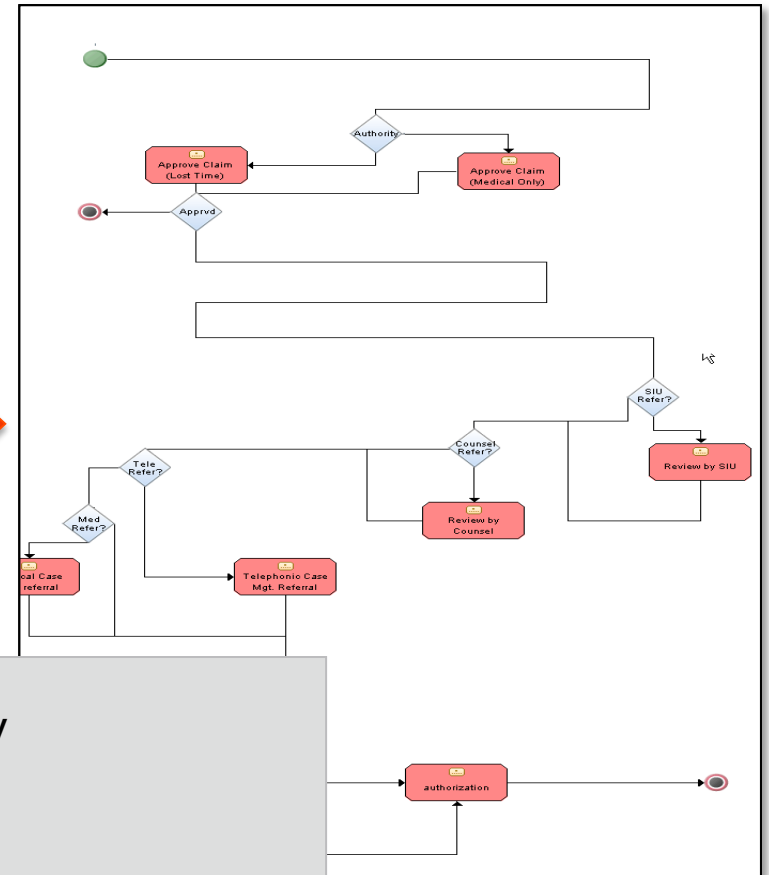
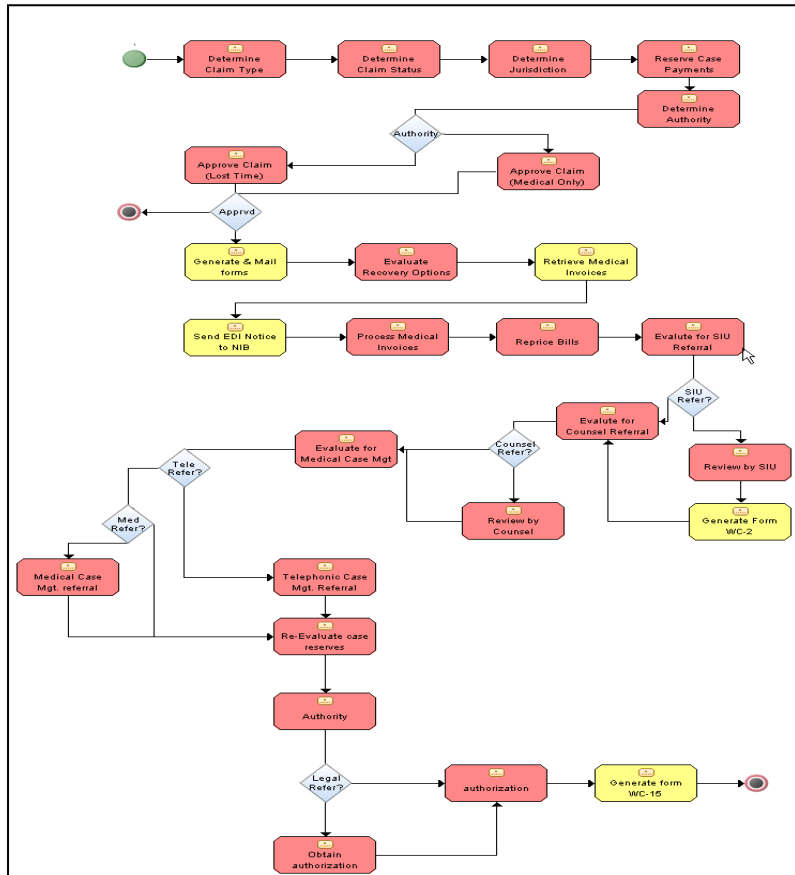
Corticon Case Study: Claims Processing

BEFORE Corticon

21 Manual Steps

AFTER Corticon

7 Manual Steps



- Accelerate Service Delivery
- Reduce Costs
- Improve Service Quality
- Improve Agility

HOW CAIDAN MAKES PROGRESS



CHALLENGE:

Expand healthcare claims processing business into new states and keep up with changing regulations as HIPPA and the Affordable Care Act (“Obamacare”).

SOLUTION:

Use Progress Corticon BRMS to modernize existing OE architecture.



VALUE:

Empower healthcare domain expert to manage volatile decision rules outside of the OpenEdge ABL.

Accelerate application customization covering the needs of each customer as well as state/local regulatory schemes.

Executing Manufacturing Process Excellence



Market Segment: Manufacturing

Application: Production Planning System Development

- Complete system re-engineering and replacement to:
 - Increase flexibility and agility in manufacturing process
 - Accommodate a wide range of ever-changing commercial and production rules
- Corticon chosen because:
 - Accelerated application development and maintenance
 - Increased business transparency and control – rules managed by industrial engineers
 - Ease of integration

See: <http://www.progress.com/docs/casestudy/Columbus.pdf>

Next Generation eCommerce



Market Segment: eCommerce

Application: Online marketplace

- World's largest online marketplace
- Corticon used in next generation eBay marketplace
- Corticon selected over in-house rules engine, IBM Ilog, and open source due to:
 - Scalability to millions of transactions per day
 - Guaranteed rule integrity
 - Speed of development
 - Processing >40M transactions per day, <10ms per transaction

Claims Processing with BPM



Market Segment: Insurance

Application: Asset Damage (Property & Casualty)

- One of the world's largest life insurance and pension companies with millions of customers worldwide
- Considerable cost and FTEs reductions as result of straight-through processing
- Improved customer satisfaction (quicker claims handling)
- Less IT dependency, domain experts owns content and change process
- Staying compliant and consistent with government regulations
- Straight-through processing (STP) achievement circa 85%

Agenda

- Introduction to Business Rules Management
 - What Is Business Rules Management?
 - The Business Rules Management Problem
 - The Corticon Solution
- Corticon Customer Success
- Corticon Differentiation
- Corticon Demo
- Corticon and OpenEdge
- Summary & Q&A

Progress Corticon BRMS Recognized Market “Leader”



*Corticon has **breakthrough** tools for business analysts.*



*Corticon positioned as **Leading Innovator** in Gartner Magic Quadrant*



*Corticon has developed **breakthrough** technology in the BRMS market.*

Corticon Differentiation

- Model-Driven Development
 - Automate rules without coding
- Guaranteed Rules Integrity
 - Ensure safe changes
- DeTI Engine
 - Market-best performance and scalability

Model-Driven Rules Development

Out-of-the-box ready for use by

- Business Analysts
- IT Professionals

Patented Excel-like modeling tool

- No programming
- Business friendly
- One-click deployment

The screenshot displays the Corticon eStudio interface with several key components highlighted by callouts:

- Rule Vocabulary:** A tree view on the left showing business objects/terms like 'Applicant', 'age', 'name', 'riskRating', 'skydiver', and 'policy (Policy)'.
- Conditions Table:** A table for defining rule conditions. The first two rows are:

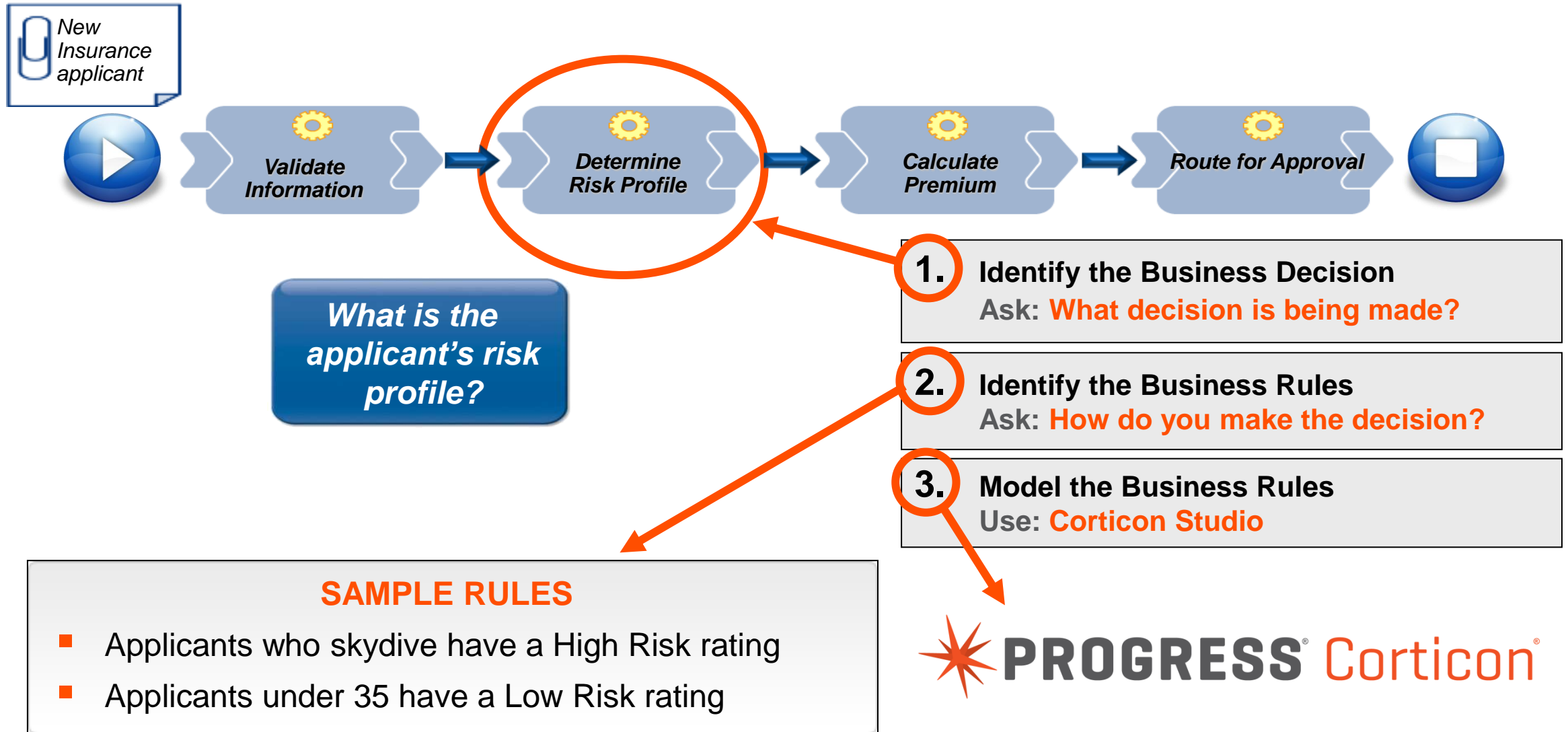
	1	2	3	4
a	Applicant.skydiver	T	-	
b	Applicant.age	-	< 35	
- Actions Table:** A table for defining rule actions. The first row is:

	High
A	Applicant.riskRating
- Rule Statements Table:** A table providing rule documentation and traceability. The first two rows are:

Ref	Post	Alias	Text
1	Info	Applicant	Applicants who skydive have a high risk rating.
2	Info	Applicant	Applicants less than 35 years of age have a low risk rating.
- Operators Library:** A tree view at the bottom left showing a comprehensive, extensible library of operators (akin to Excel functions) including 'General', 'Literals', 'Functions', 'Attribute Operators', and 'Boolean'.

Proven with the most sophisticated business problems

Corticon Studio Demonstration



OpenEdge Coding: 35 Lines of Code for 4 Business Rules

```
DEFINE INPUT PARAMETER isSkyDiver AS LOGICAL NO-UNDO.
DEFINE INPUT PARAMETER applicantAge AS INTEGER NO-UNDO.
DEFINE INPUT PARAMETER parmCurrency AS CHARACTER NO-UNDO.
DEFINE INPUT PARAMETER parmAge AS INTEGER NO-UNDO.
DEFINE INPUT PARAMETER parmIncome AS INTEGER NO-UNDO.
DEFINE OUTPUT PARAMETER ruleStatement AS CHARACTER NO-UNDO.

DEFINE VARIABLE riskRating AS CHARACTER NO-UNDO.
DEFINE VARIABLE totalPremium AS DECIMAL NO-UNDO.

IF isSkyDiver THEN
DO:
ruleStatement = "Warning" + CHR(1) + "Applicants who skydive have a high risk rating regardless age.".
riskRating = "High".
totalPremium = 150.
ruleStatement = ruleStatement + CHR(3) + "Info" + CHR(1) + "Applicants who are " + riskRating + " risk pay a premium of " + parmCurrency + STRING(totalPremium) + ".".
RETURN.
END.
ELSE
DO:
IF applicantAge < parmAge THEN
DO:
ruleStatement = "Info" + CHR(1) + "Applicants less than " + STRING(parmAge) + " years of age have a low risk rating.".
riskRating = "Low".
totalPremium = 50.
ruleStatement = ruleStatement + CHR(3) + "Info" + CHR(1) + "Applicants who are " + riskRating + " risk pay a premium of " + parmCurrency + STRING(totalPremium) + ".".
RETURN.
END.
ELSE
DO:
ruleStatement = "Info" + CHR(1) + "Applicants who are " + STRING(parmAge) + " year or older and don't skydive are medium risk.".
riskRating = "Medium".
totalPremium = 100.
ruleStatement = ruleStatement + CHR(3) + "Info" + CHR(1) + "Applicants who are " + riskRating + " risk pay a premium of " + parmCurrency + STRING(totalPremium) + ".".

RETURN.
END.
END.
```

Model-Driven Rules Development

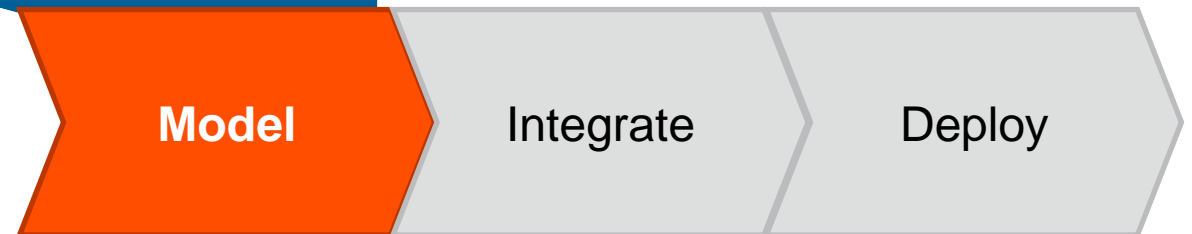
Traditional Approach

Often contains errors and performance issues



Reduce development
and change cycles
by 90%

Corticon Approach



Higher quality, higher performance, agility



Benefits of Model-Driven Rules Management

Sample ROI Analysis – Automation of single, decision-making task*

	1 st Generation	Corticon
Initial Development		
Analyze	20 hours	20 hours
Prepare – Design	5 hours	N/A
Prepare – Implement	200 hours	2 hours
Total	225 hours	22 hours
Change Cycle		
Analyze	15 hours	0.5 hours
Prepare – Design	7 hours	N/A
Prepare – Implement	28 hours	1.5 hours
Total	50 hours	2 hours

**10x
Improvement**

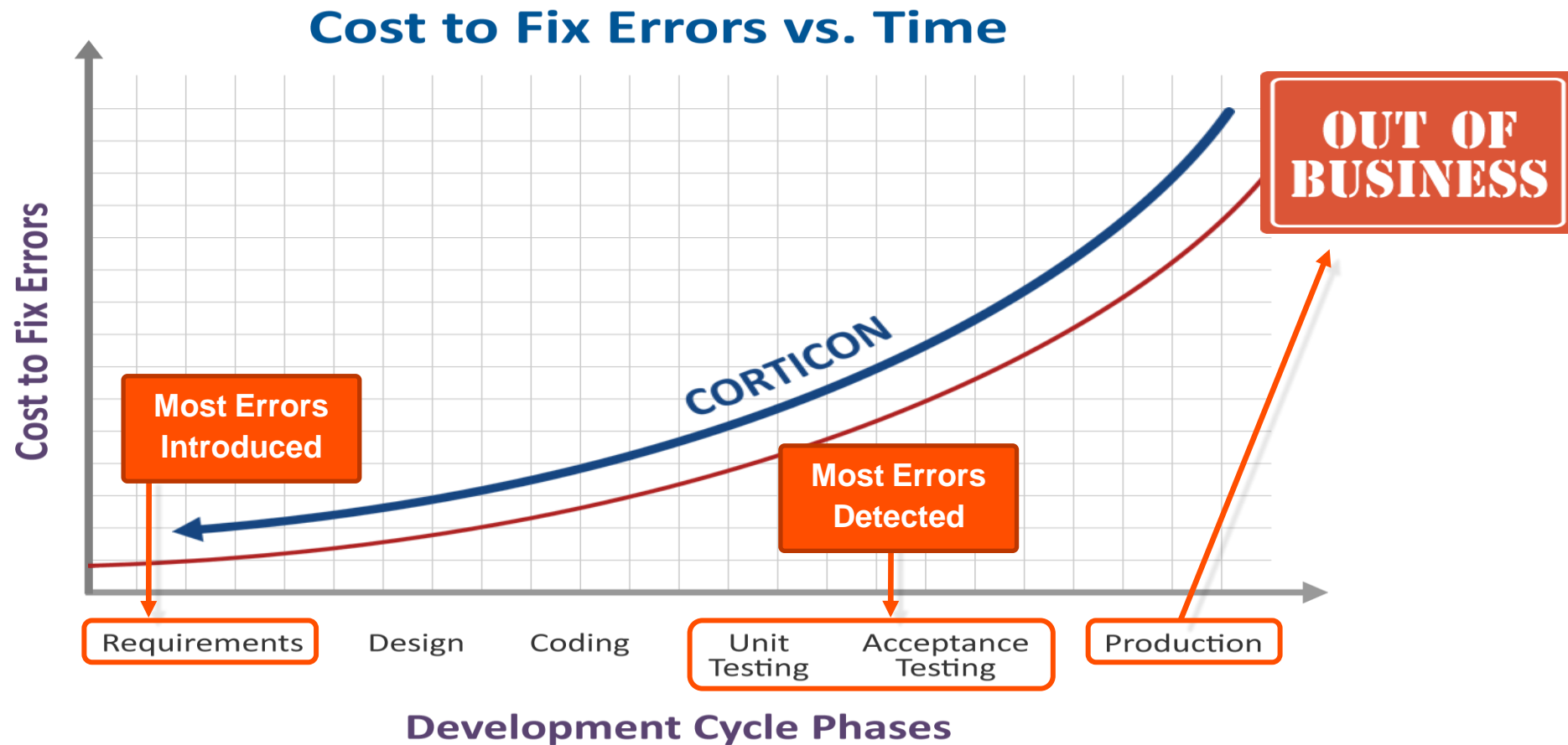
**25x
Improvement**



*Per NCAA customer testimonial. See webinar: [Extreme Agility: Achieving 25x Acceleration in Business Cycles with Model-Driven Business Rules Management](#)

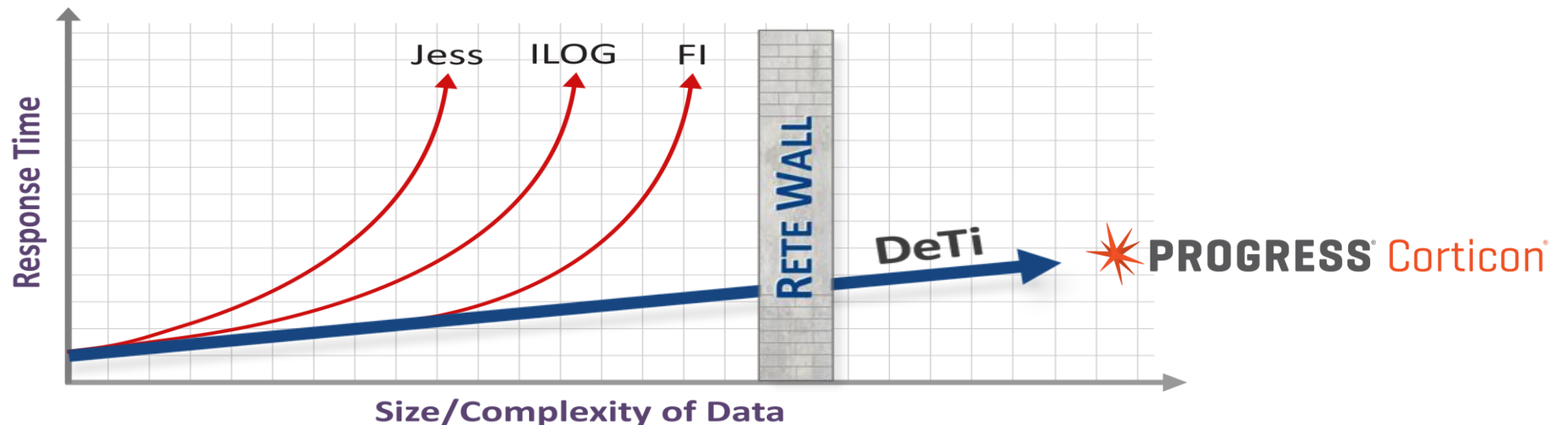
Guaranteed Rules Integrity

- Debugging rules is a major issue with traditional rule development
- Corticon identifies logical errors during requirements specification



Corticon 5 Difference – Engine Performance

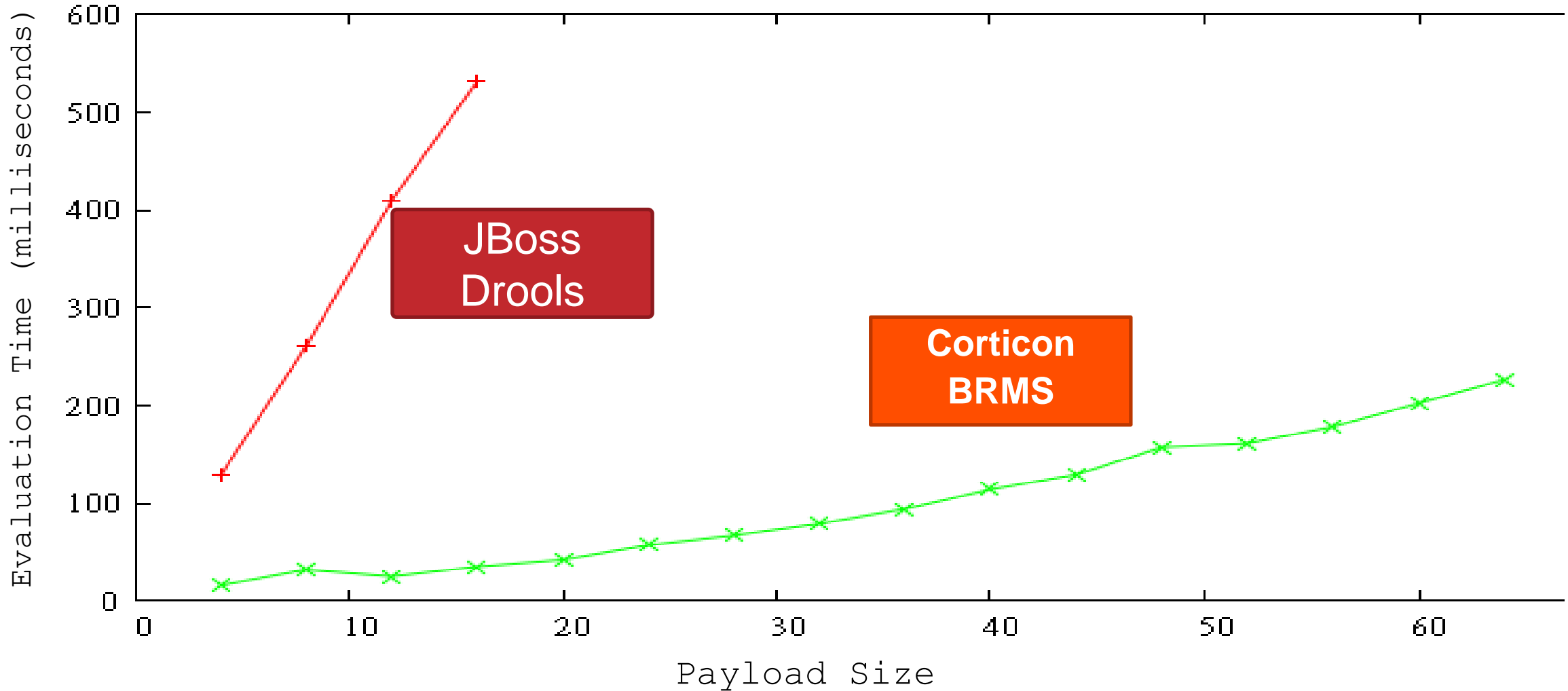
- Traditional pattern matching algorithm is Rete
 - Scales well with increasing number of rules
 - Degrades exponentially with increasing complexity of data – the “Rete Wall”
- Corticon’s patented DeTi (Design Time) algorithm
 - Scales linearly with number of rules and complexity of data



Corticon vs. Drools

Progress' Performance & Scalability Tests

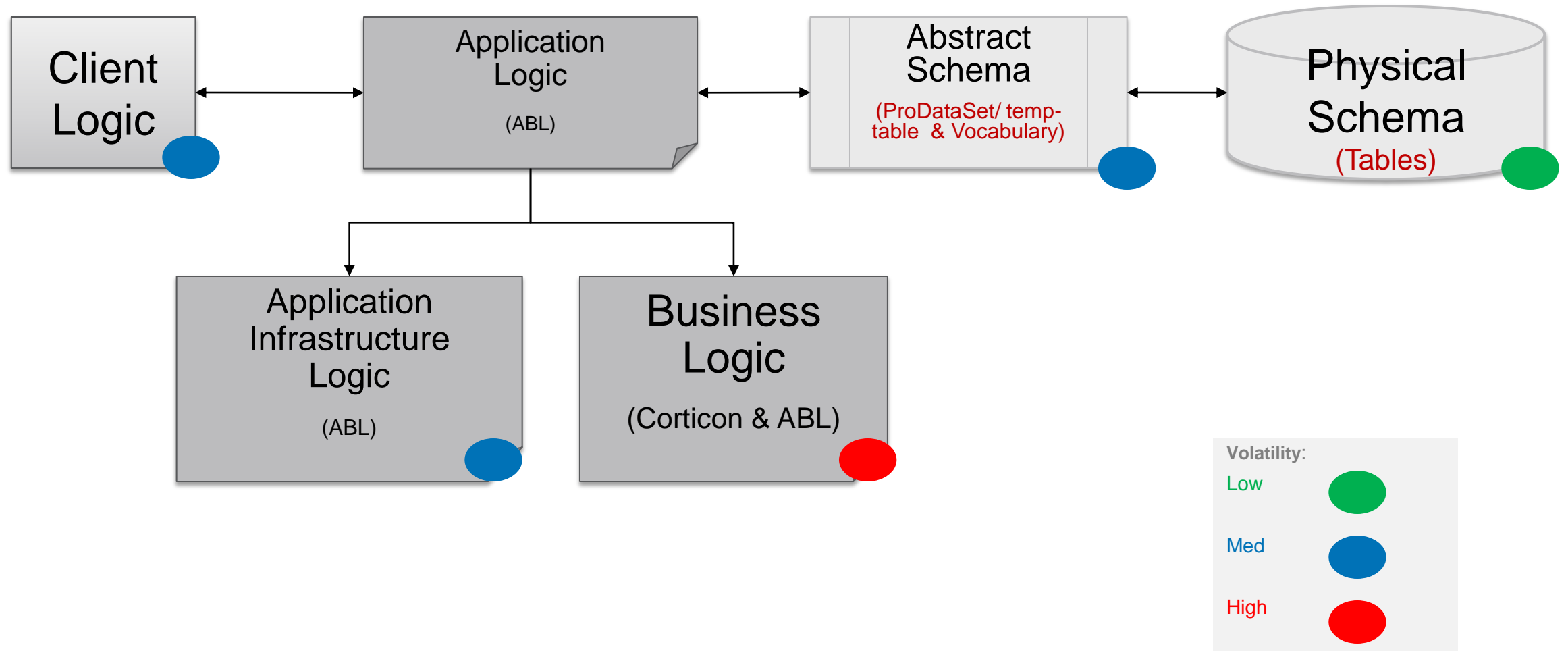
Scalability for increasing fact



Agenda

- Introduction to Business Rules Management
 - What Is Business Rules Management?
 - The Business Rules Management Problem
 - The Corticon Solution
- Corticon Customer Success
- Corticon Differentiation
- Corticon Demo
- Corticon and OpenEdge
- Summary & Q&A

OpenEdge Application Architecture



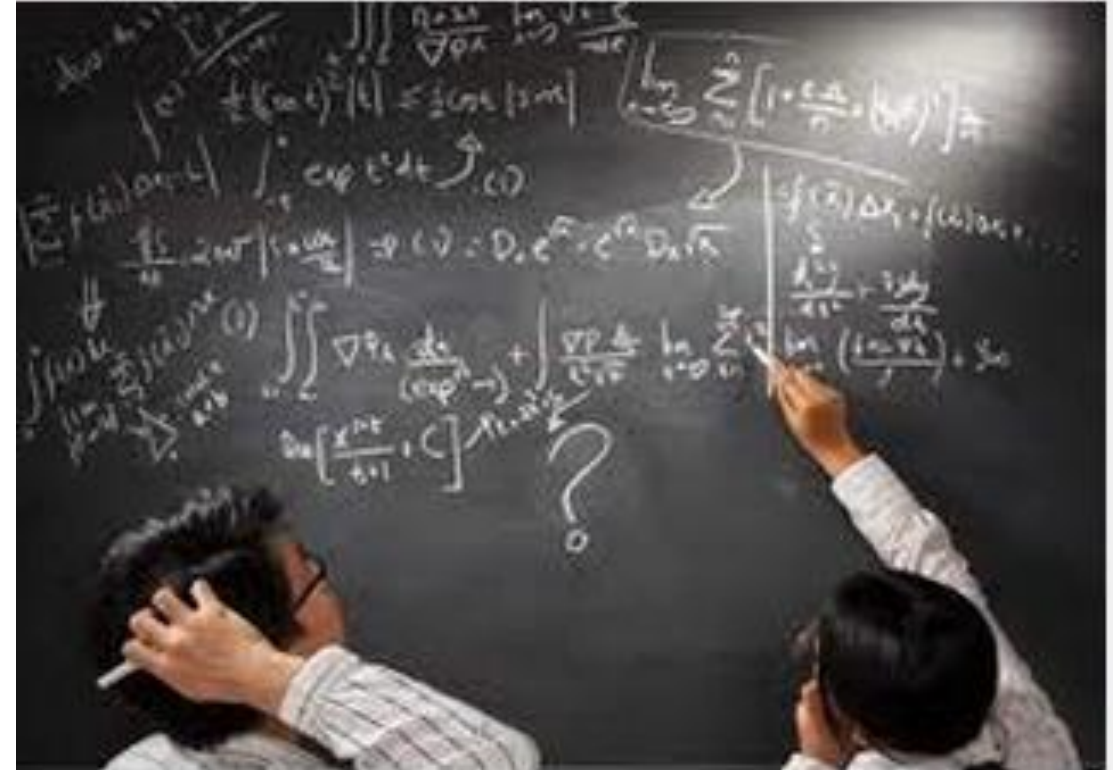
Why Use Corticon?

- Puts volatile decision logic **in hands of business** (domain experts instead of just IT)
- Allows decisions to be managed in a **separate tier** with a more agile lifecycle – separation of system and business logic
- **Accelerates** logic development time and **reduces** maintenance time
- Reduces volatility of ABL logic and **dependence** on ABL experts
- Improves ease of use through **good visual tooling**
 - Build vocabularies and rules declaratively through a model driven approach
- Improves application **quality**
 - Gaps & overlap analysis – prevent technical inconsistencies
 - Use case testing on the fly



Choosing Between ABL and Corticon

- Is the business logic the result of relatively complex decisions?
- Is the business logic customized by the client?
- Are changes frequently required to the application's business logic?
- Is quality / integrity of logic critical?



The more “yes” answers, the better the fit for Corticon!

Progress Corticon and OpenEdge

- Products Integrated Today
 - Integration White Paper Available
 - Integration Options
 - Web Services Call-Out (Decision Points) – via ABL and OE BPM
 - Requires OE 10.2 or greater
- OE 11.3 Integration Productivity Features
 - ABL API/macros to eliminate integration code
 - Shared Data Model
 - Direct Integration with OpenEdge Database (Batch Processing)
 - Improved OE BPM Integration

Agenda

- Introduction to Business Rules Management
 - What Is Business Rules Management?
 - The Business Rules Management Problem
 - The Corticon Solution
- Corticon Customer Success
- Corticon Differentiation
- Corticon Demo
- Corticon and OpenEdge
- Summary & Q&A

EVALUATE CORTICON

Register to evaluate the industry's fastest, easiest-to-use business rules management systems (BRMS) - Corticon.

Corticon's model-driven approach delivers a 10x acceleration in application development and maintenance cycles. With Corticon, business rules are managed as business friendly models, with zero programming. This enables better alignment of business and IT resources, and empowers analysts and policy makers - those who best understand the dynamics forcing change within the organization - to safely manage the business rules. You need to experience it to believe it.

Ready to take Corticon for a test drive? Register for your 90-day evaluation today!

DOWNLOAD SOFTWARE

Login using the form below. If you are not a member of the Progress community, please [create a new account](#).

PROGRESS ID

[Tell me more >](#)

Username

[Did you forget your Username?](#)

Password

[Did you forget your Password?](#)

Login

Progress Software cares about your security. You may be required to periodically reset your password.

[Do you need login help?](#)

[Click here to create new account.](#)

www.corticon.com

Summary

**Better, faster
decisions by
automating
business rules**



**Patented
“no-coding”
rules engine**

Client Benefits:

- Mitigate Risk
- Optimize Operations
- Find New Revenue Opportunities

IT Benefits:

- Accelerate Rate of Change
- Empower Business Users
- Ensure Performance and Scalability

Contact Details

- Mark Allen
maallen@progress.com

Learn More / Download Evaluation Software

- www.corticon.com





PROGRESS